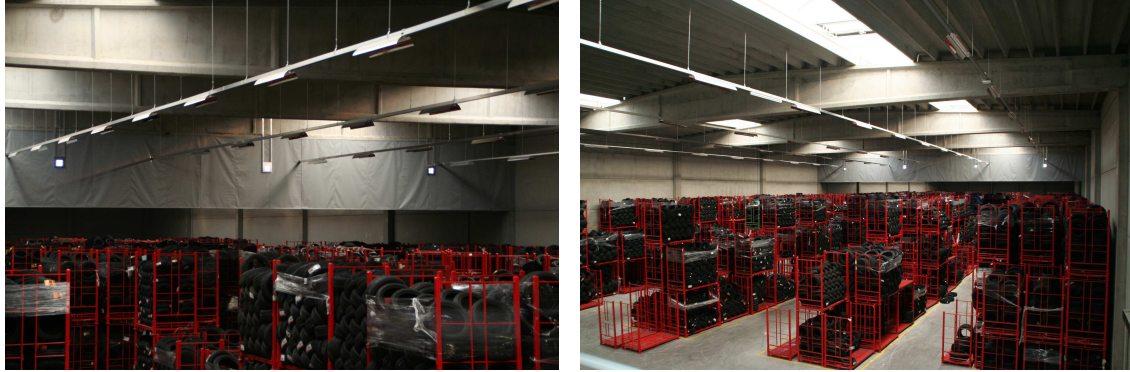




Brakel® fixed smoke curtain



Brakel® accredited fixed smoke curtains for compartmentalisation

Accredited fixed smoke curtains for compartmentalisation

Fixed smoke curtains are often for fire compartmentalisation purposes in buildings such as warehouses, distribution centres, commercial centres and hangars larger than 1600 m². The Brakel smoke curtain is ideally suited for this application, while it has also been (CE) EN12101-1 Class D120 accredited by MPA.

The Brakel smoke curtain is supplied as standard in the colour grey, while it is also available in white. The mesh fitted has a double-sided polyurethane coating, weighs 450 gram/m² and is 0.45 mm thick.

The curtains are tailor made – in sections with a 20 cm overlap – and have a seamed bottom edge to enable the insertion of a weight rod or chain or a steel fixing wire.