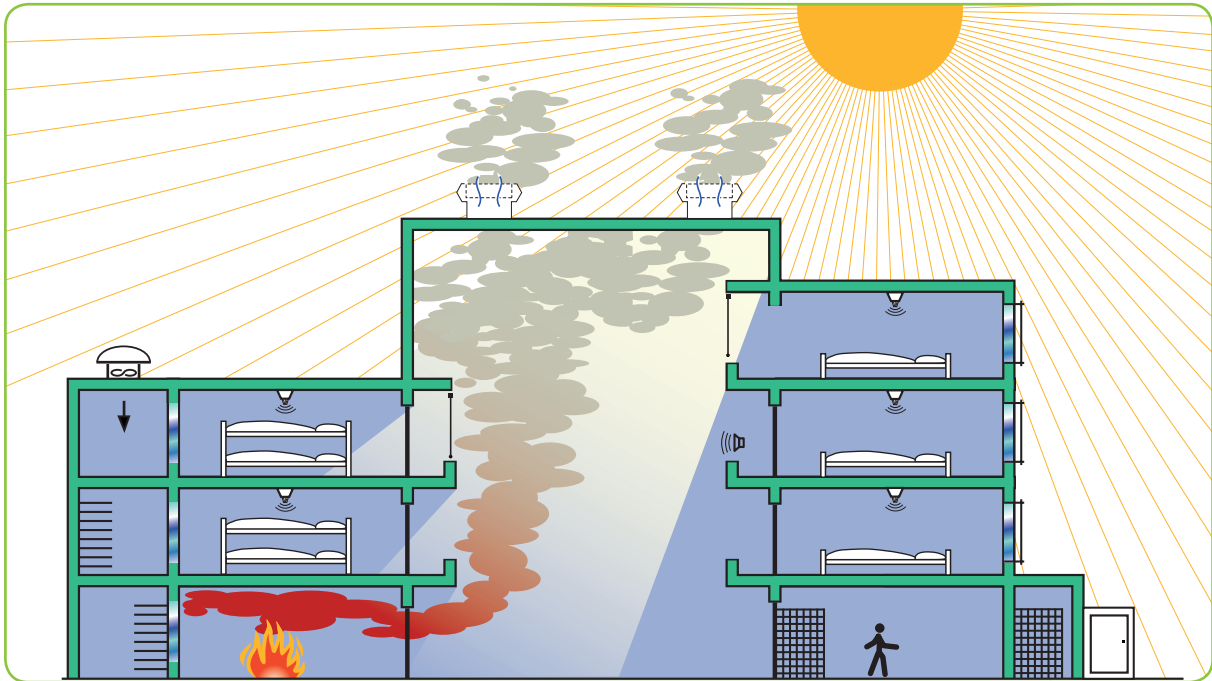


## Brakel® Prison Concept

# Safety and a good atmosphere is essential

In a prison where a large number of people are kept in a relatively small area, a good indoor climate with effective ventilation and adequate daylight access is extremely important. When a prison is built or extended, it is crucial that the fire safety and indoor climate issues are addressed at an early stage. These are buildings that are capable of holding large numbers of people and where detainees and prison personnel alike can be allowed to escape safely in the event of fire. An effective system for smoke and heat exhaust, prompt fire detection, the alerting of any people present and any fire services together with an efficient evacuation plan are of vital importance.



#### Brakel considers:

- The wishes and requirements of both the client and the authorities
- Exhaust of smoke and heat using smoke and heat exhaust systems
- The influence of wind on the building is addressed, preventing the undesired spread of smoke
- Prompt detection of smoke and fire using fire alarm systems
- Prompt alerting of personnel and authorities using fire alarm systems and evacuation systems
- The prevention of fire transfer and fire spread (WBDBO - Dutch Building Code) using fire doors, smoke and fire screens
- Structural aspects relating to safety (escape routes, compartmentation, etc.)
- The option to use fire services (fire suppression)
- The provision of safe escape routes using signage and emergency lighting
- Regular monitoring of fire safety through maintenance, inspections and certification
- Overpressure systems in stairwells and fire service lifts
- Gas extinguishing systems for example in commercial kitchens
- Aspiration detection in the cells
- The use of the SHEV system for daily ventilation
- Daylight access using the SHEV systems, plus rooflights/skylights and/or glass roofs

Total solutions	Advantages
<ul style="list-style-type: none"> <li>• Fire Safety Engineering</li> </ul>	<ul style="list-style-type: none"> <li>• Total fire safety</li> <li>• The architectural, installation, technical and organisational aspects are all addressed</li> <li>• Fire Department fire suppression protocols are taken into account</li> </ul>
<ul style="list-style-type: none"> <li>• Exhaust of smoke and heat (SHEV) system smoke and heat exhaust system*</li> <li>• Products in accordance with EN 12101-2 and 12101-3</li> <li>• Controlled natural SHEV</li> </ul>	<ul style="list-style-type: none"> <li>• The exhaust of smoke and heat to reduce temperatures temperatures and create safe escape routes</li> <li>• Improved visibility during rescues and fire extinguishing</li> <li>• SHEV can be used for daily ventilation and daylight access</li> <li>• Smoke expelled via the shortest route</li> <li>• Negative wind influence prevented</li> </ul>
<ul style="list-style-type: none"> <li>• Detection, fire alarm system*</li> </ul>	<ul style="list-style-type: none"> <li>• Prompt alerting to smoke and fire</li> <li>• Alerting authorities</li> </ul>
<ul style="list-style-type: none"> <li>• Evacuation alarm system*</li> <li>• Emergency lighting and escape route signage*</li> </ul>	<ul style="list-style-type: none"> <li>• Safe and fast evacuation</li> </ul>
<ul style="list-style-type: none"> <li>• Compartmentation using fire doors, smoke and fire screens</li> <li>• Smokescreens in accordance with EN 12101-1</li> <li>• Compartmentation*</li> <li>• Overpressure installations*</li> </ul>	<ul style="list-style-type: none"> <li>• Prevents the spread of smoke</li> <li>• Prevents the spread of fire</li> <li>• Prevent fire transfer and fire spread</li> <li>• Adjoining fire escape stairwells (escape routes and fire services)</li> </ul>
<ul style="list-style-type: none"> <li>• Management and maintenance</li> <li>• Inspection</li> <li>• Certification*</li> </ul>	<ul style="list-style-type: none"> <li>• Compulsory annual fire safety checks</li> <li>• All-in contract</li> <li>• Guarantee of fire safety</li> </ul>
<ul style="list-style-type: none"> <li>• Ventilation system</li> </ul>	<ul style="list-style-type: none"> <li>• Combination with SHEV</li> <li>• Elimination of excessive heat in the summer</li> <li>• A well controlled indoor climate, adapted to requirements</li> </ul>
<ul style="list-style-type: none"> <li>• Adequate daylight access supplied by glass roofs, glass rooflights and skylights, louvered ventilators and opening lights</li> </ul>	<ul style="list-style-type: none"> <li>• Positive effect on mental well-being</li> <li>• Pleasant work climate</li> </ul>

\* In accordance with local regulations



[info@brakel.com](mailto:info@brakel.com)



[www.brakel.com](http://www.brakel.com)

